

ONE TWELVE GALLERY

info@onetwelvegallery.com

112 Krog St. Suite 5

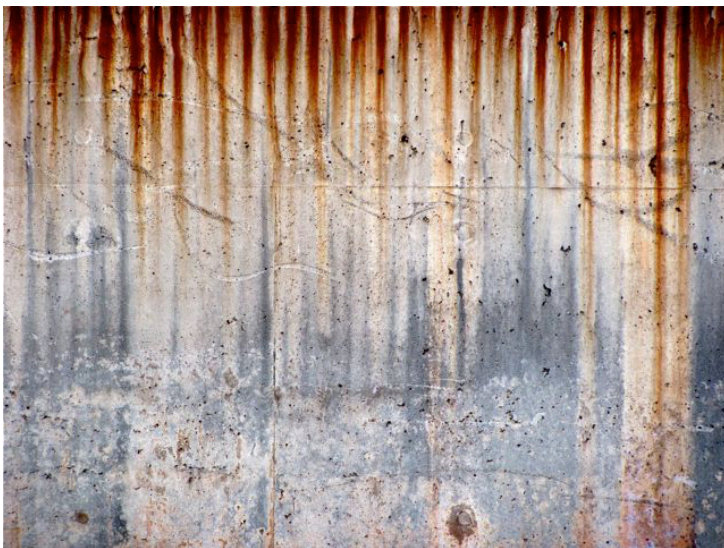
Atlanta, GA 30307

www.onetwelvegallery.com

FOR IMMEDIATE RELEASE — May 17, 2010

Contact: Annie Drexler
info@onetwelvegallery.com

BUILT TO RUST COMES TO INMAN PARK'S ONE TWELVE GALLERY



May 17, 2010 — ATLANTA, Ga. — One Twelve Gallery in the Stove Works of Inman Park will host *Built to Rust*, oxidation canvases and sculpture by Patrick Toups.

Toups, a Decatur resident, became interested in oxidation while riding the MARTA line. He noticed that man-made protective structures like fence posts lining the tracks were rusting from decades of rainfall, and came to understand the process of oxidation as nature's way of responding to the city.

For the One Twelve Gallery show Patrick is building his largest ever oxidation canvas,

which will be 21 feet tall and 60 feet wide. He likes the idea of people encountering his work on this monumental scale.

Toups says that he “uses every part of the buffalo” in order to make his foundry work as environmentally sustainable as possible. In addition to his oxidation canvases, Toups plans to display some miscasts from the iron pours he hosts at Castleberry Hill's Elliott Street Pub, in order to reveal the process behind his work.

Built to Rust will begin Friday, June 4th with an artists' reception from 7:00 to 9:00 pm open to the public. The show will run until August 8th, 2010.

One Twelve Gallery is located inside City Church—Eastside, in Suite 5 of the Stove Works, at 112 Krog St., Atlanta, GA 30307. The gallery is open Thursday-Saturday 11-4 and by appointment.

For more information, visit onetwelvegallery.com.